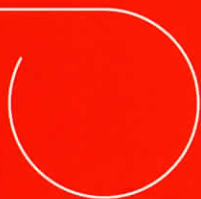


Lampre[®]
lamiera prerivestite



COLOUR COLLECTION



CARATTERISTICHE TECNICHE TECHNICAL INFORMATION

Spessore del rivestimento Film:
da 100 µm a 1500 µm

Film coating thickness:
from 100 µm to 1500 µm

Supporti metallici standard

- Acciaio Zincato a caldo
- Laminato a freddo
- Alluminio
- Acciaio inox

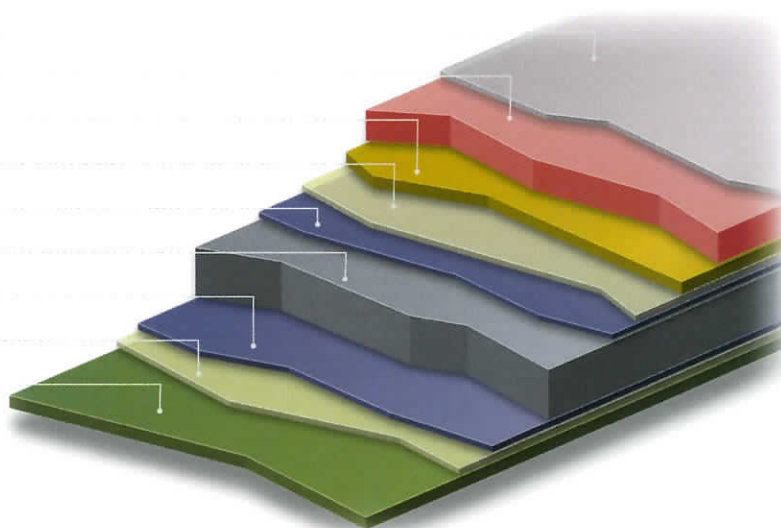
Standard metal supports

- Hot dip galvanized steel
- Cold-rolled
- Aluminum
- Stainless steel

DIMENSIONI | DIMENSIONS

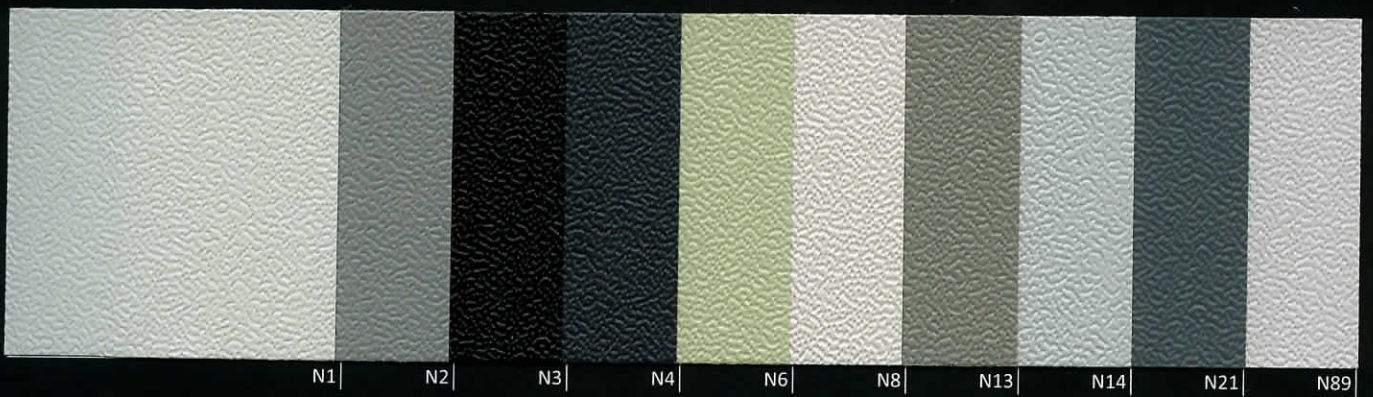
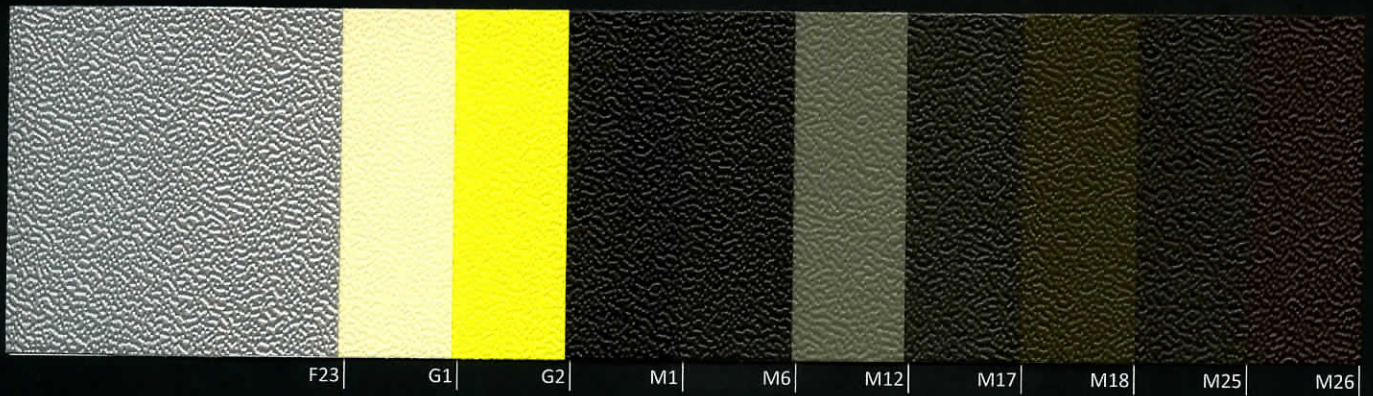
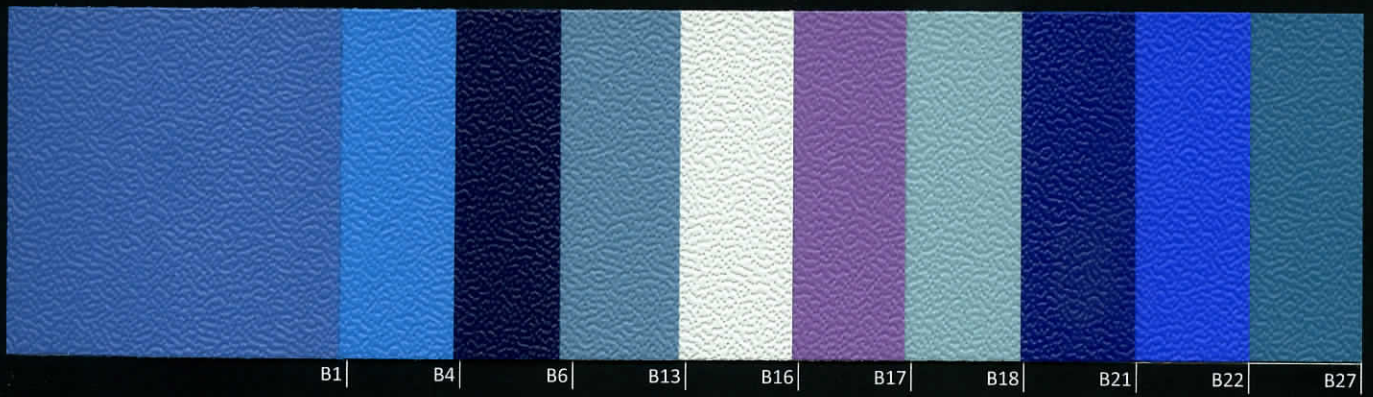
Spessore del supporto metallico: Thickness of metal support:	da 0.3 a 2 mm from 0.3 to 2 mm	.0118 a .078 inches .0118 to .078 inches
Fogli: Sheet:	Larghezza max Max width	1500 mm 55.118 inches
	Lunghezza max Max length	5000 mm 196.85 inches
Nastri: Strip:	Larghezza max Max width	1500 mm 55.118 inches
	Larghezza min Minimum width	19 mm .748 inches
Coils: Coils:	Diametro interno I.D.	500 mm > 20"
	Diametro esterno max O.D.	1550 mm 61.02 inches

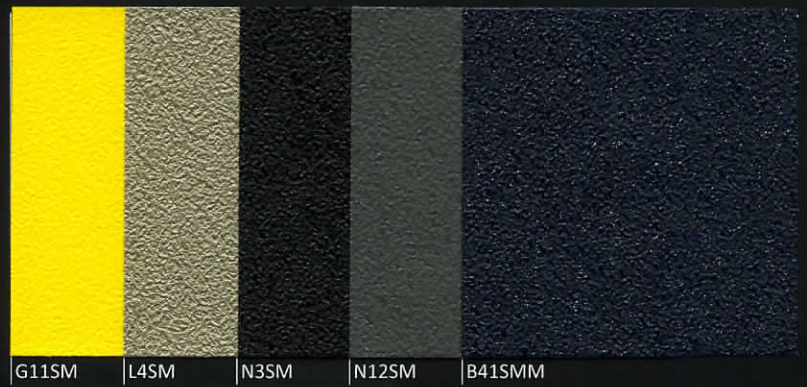
Film di protezione	Protective film
Film PVC	PVC film
Adesivo	Adhesive
Trattamento superficiale	Surface treatment
Zinco	Zinc
Supporto metallico	Metallic support
Zinco	Zinc
Trattamento superficiale	Surface treatment
Back coat Primer	Back coat Primer

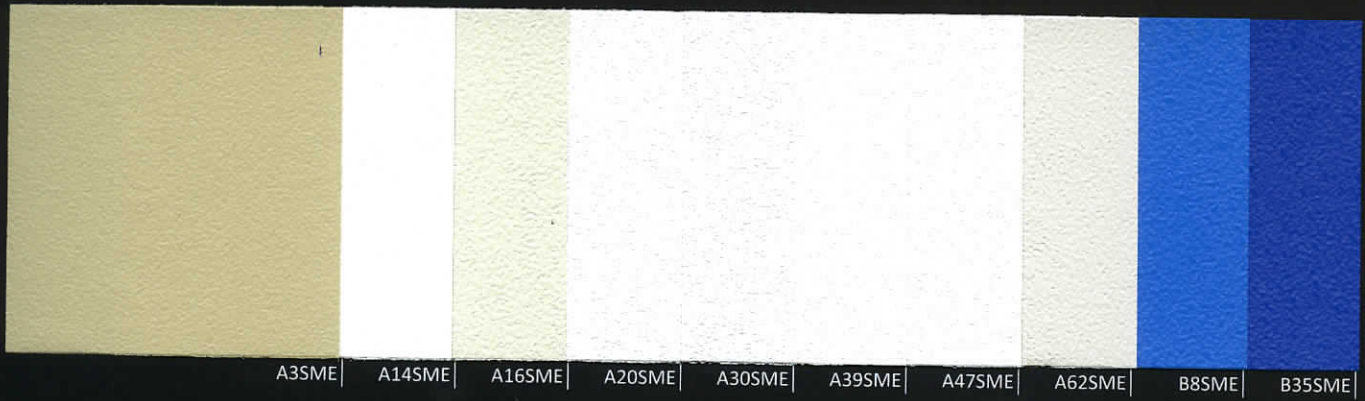


Nonostante lo sforzo profuso per garantire la correttezza dei dati riportati in questa brochure, Lampre, includendo le sue consociate, non si assume responsabilità per eventuali errori o informazioni che dovessero rivelarsi non corrette.

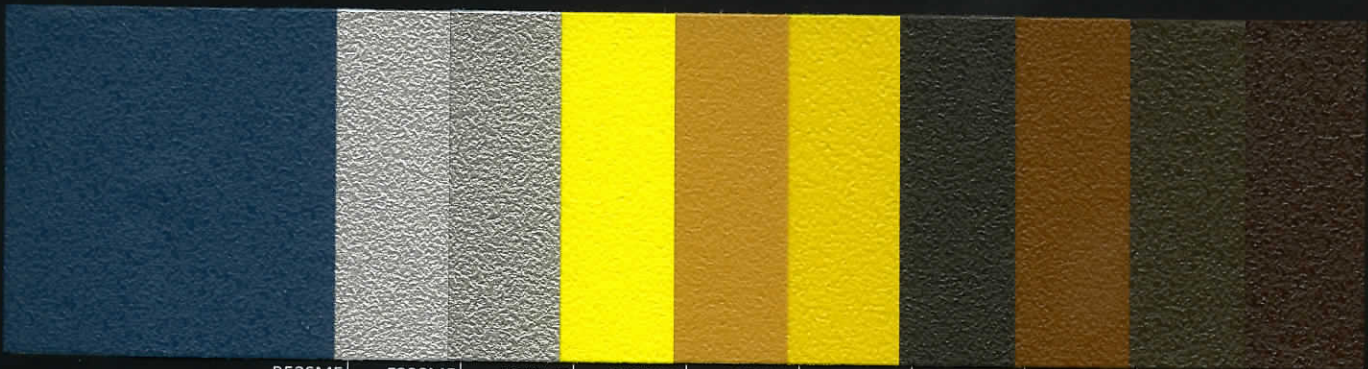
Care has been used to guarantee that the information contained in this brochure is precise, but Lampre, including its correlated companies, does not accept responsibility or liability for errors or information which is found to be incorrect.







A3SME | A14SME | A16SME | A20SME | A30SME | A39SME | A47SME | A62SME | B8SME | B35SME



B52SME | F33SME | F37SME | G13SME | G15SME | G27SME | M10SME | M21SME | M22SME | M24SME



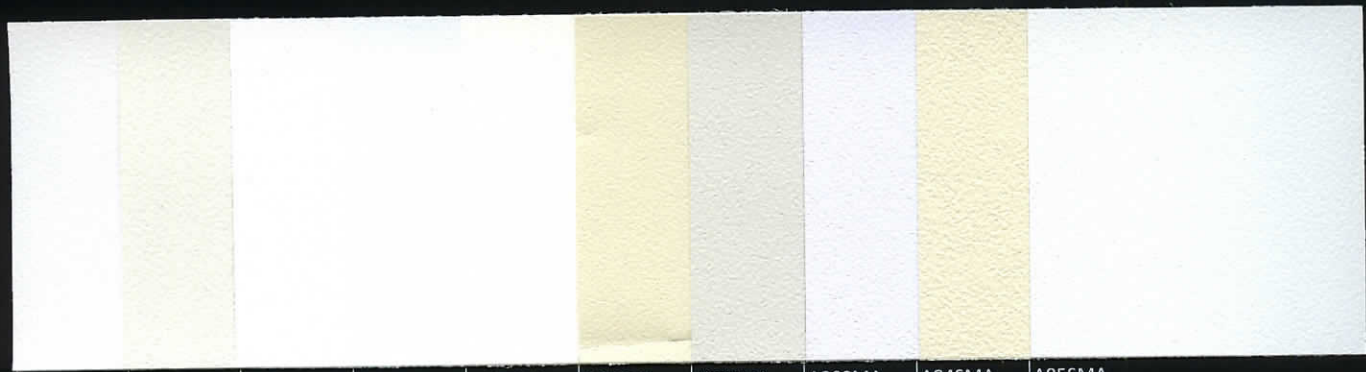
N11SME | N42SME | N63SME | N64SME | N67SME | N77SME | R8SME | R9SME | R15SME | V8SME



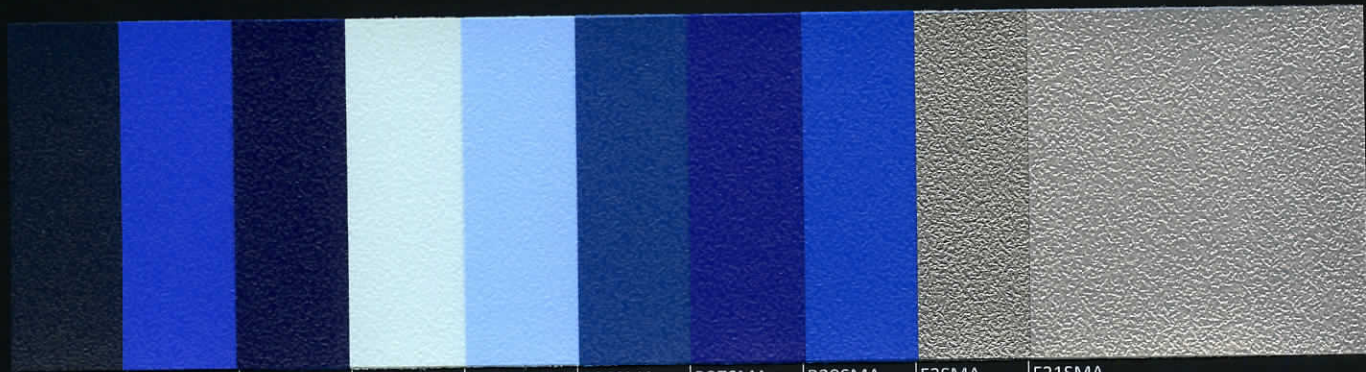
V16SME | V23SME | V24SME | N85GME | M23SMEM | N43SMEM | N56SMEM | N76SMEM | R22SMEM | V33SMEM



A1SMA | A6SMA | A9SMA | A15SMA | A17SMA | A19SMA | A22SMA | A31SMA | A38SMA | A42SMA



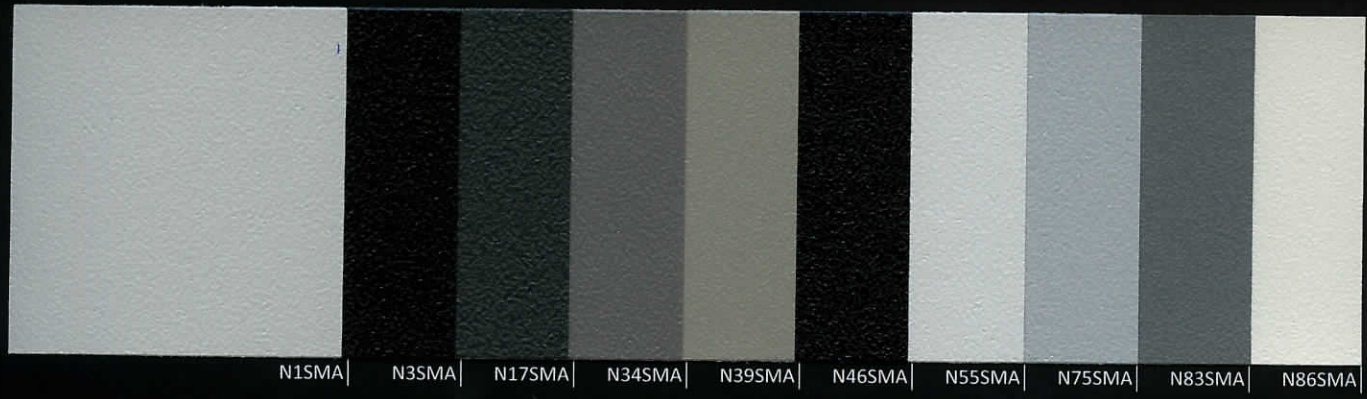
A43SMA | A56SMA | A57SMA | A59SMA | A66SMA | A67SMA | A68SMA | A80SMA | A84SMA | A85SMA



B10SMA | B22SMA | B25SMA | B31SMA | B32SMA | B34SMA | B37SMA | B39SMA | F2SMA | F21SMA



F23SMA | G9SMA | G14SMA | G17SMA | G22SMA | G28SMA | M3SMA | M32SMA



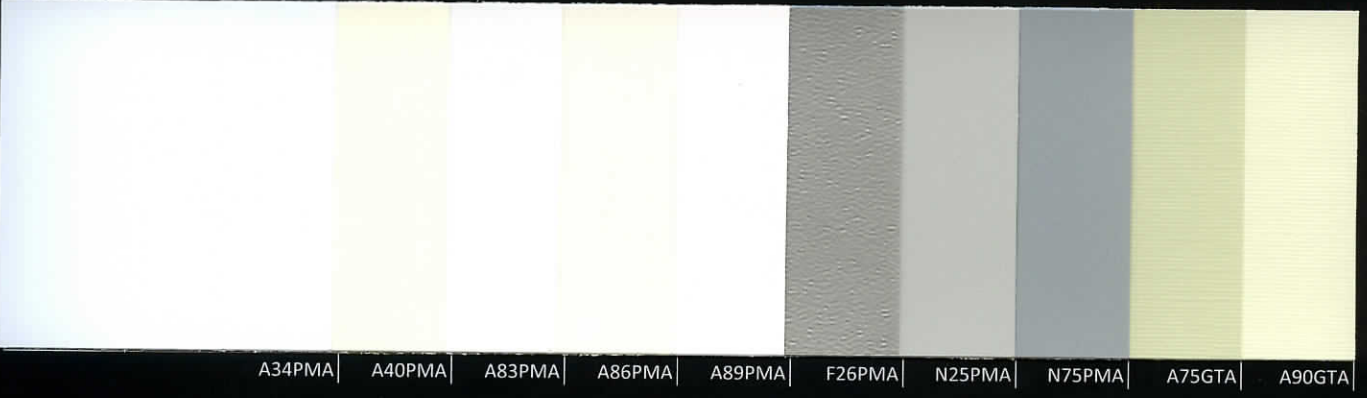
N1SMA | N3SMA | N17SMA | N34SMA | N39SMA | N46SMA | N55SMA | N75SMA | N83SMA | N86SMA



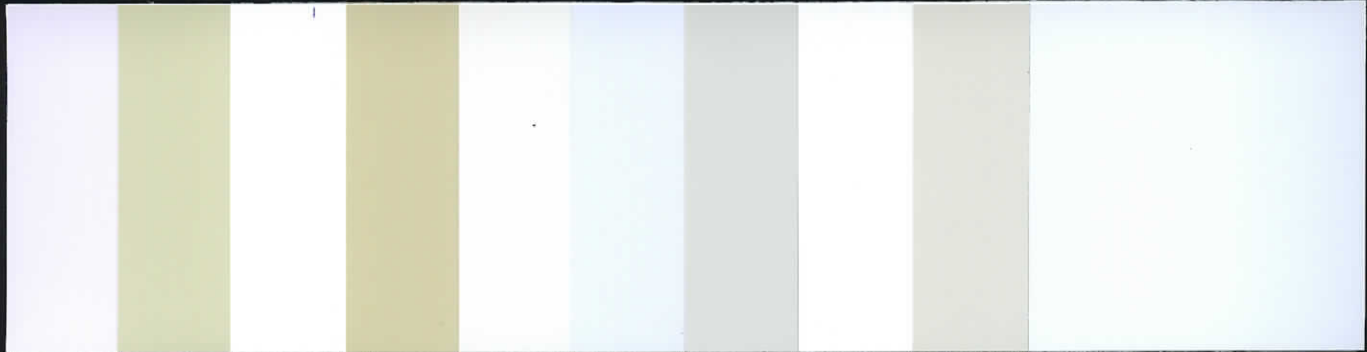
N87SMA | R5SMA | R20SMA | R21SMA | R23SMA | R33SMA | V18SMA | V30SMA | N47SMAM | R24SMAM



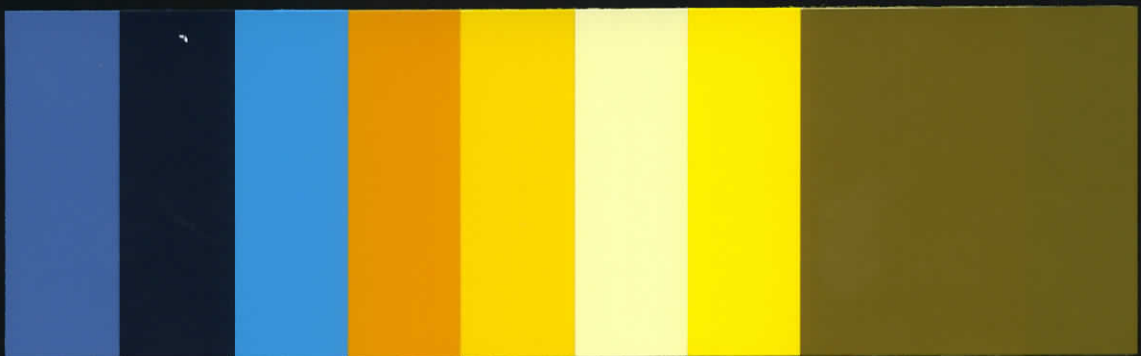
A63CDA | A69GMA | A23VA | A36OA | A45GMAO | A41SMAO | F21PVA | N2PVA | N47PVAM



A34PMA | A40PMA | A83PMA | A86PMA | A89PMA | F26PMA | N25PMA | N75PMA | A75GTA | A90GTA



A1SA | A2SA | A4SA | A5SA | A6SA | A24SA | A35SA | A65SA | A68SA | A72SA



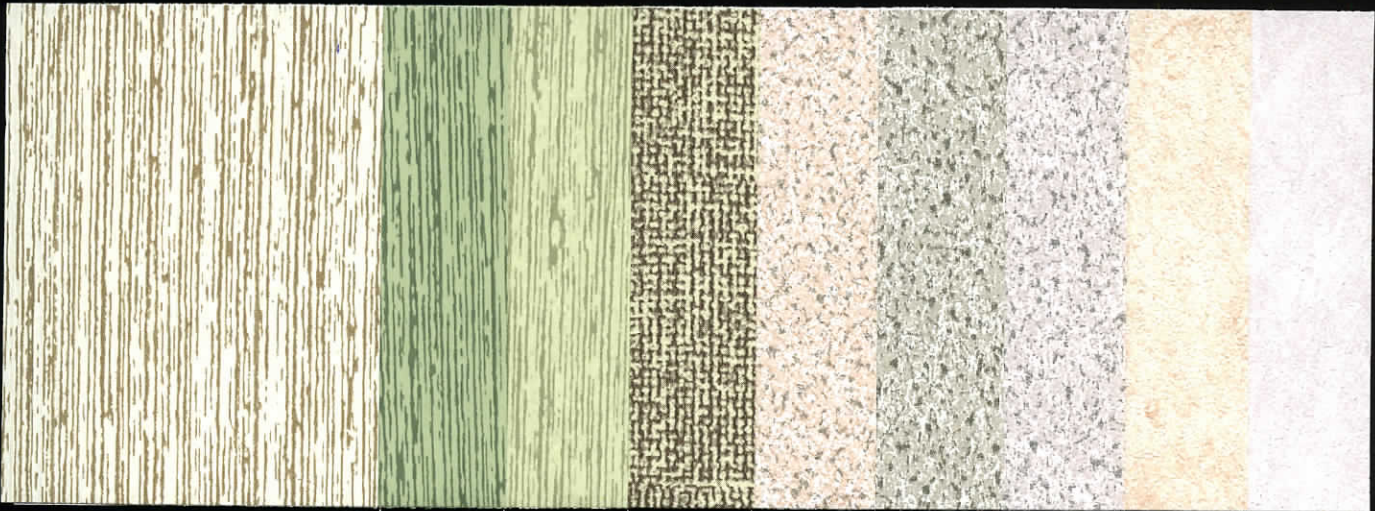
B1SA | B3SA | B53SA | G4SA | G13SA | G19SA | G25SA | L1SA



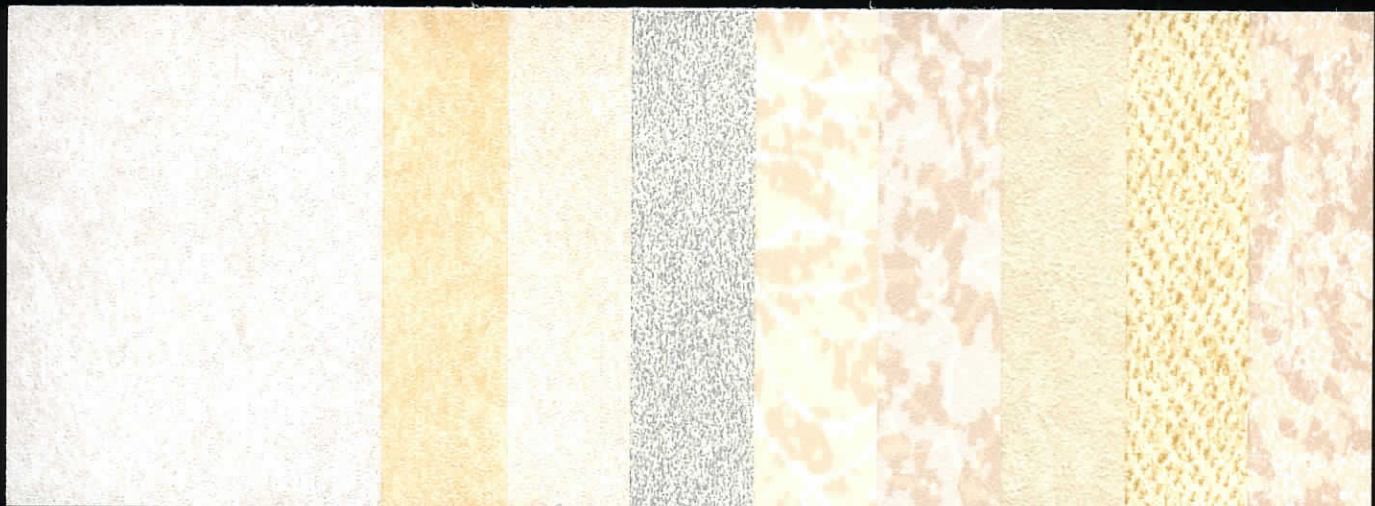
M2SA | M30SA | N3SA | N4SA | N5SA | N9SA | N12SA | N19SA



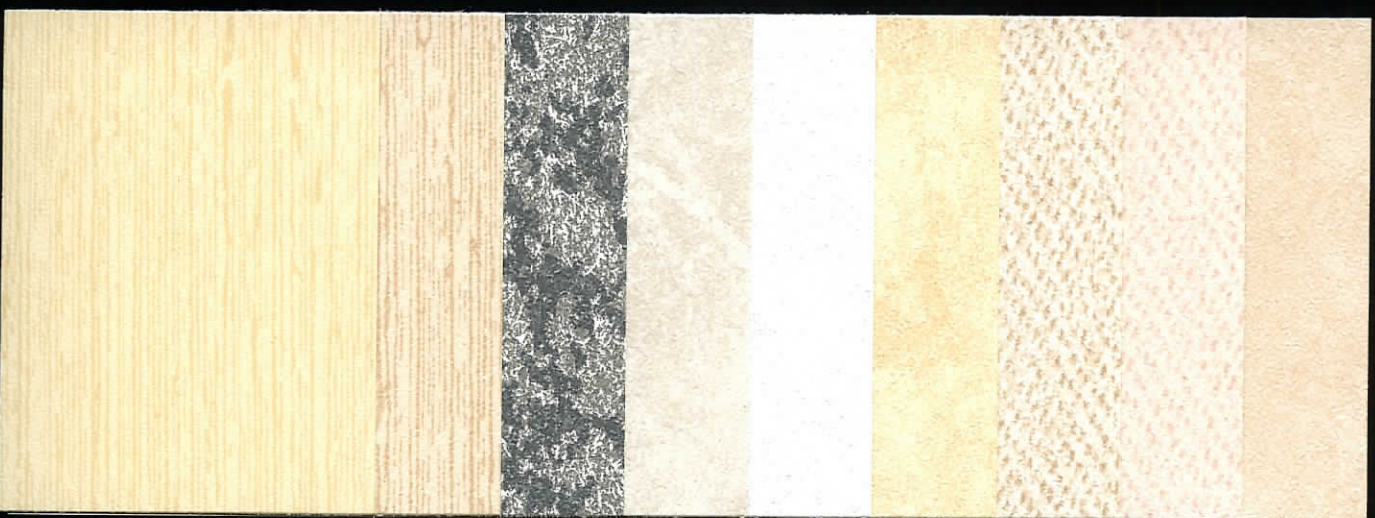
R3SA | R7SA | R12SA | R13SA | R25SA | V13SA | V19SA | V39SA



DT6 | DT7 | DT9 | DT3LA | DT21SM | DT20SMA | DT22SMA | DT26SMA | DT28SMA



DT29SMA | DT30SMA | DT31SMA | DT32SMA | DT34SMA | DT35SMA | DT36SMA | DT37SMA | DT39SMA



DT44SMA | DT45SMA | DT47SMA | DT49SMA | DT51SMA | DT52SMA | DT57SMA | DT58SMA | DT60SMA



DL1 | DL5 | DL6 | DL10 | DL13 | DL27 | DL68 | DL73 | DL76



DL83 | DL84 | DL85 | DL86 | DL87 | DL88 | DL91 | DL92 | DL93



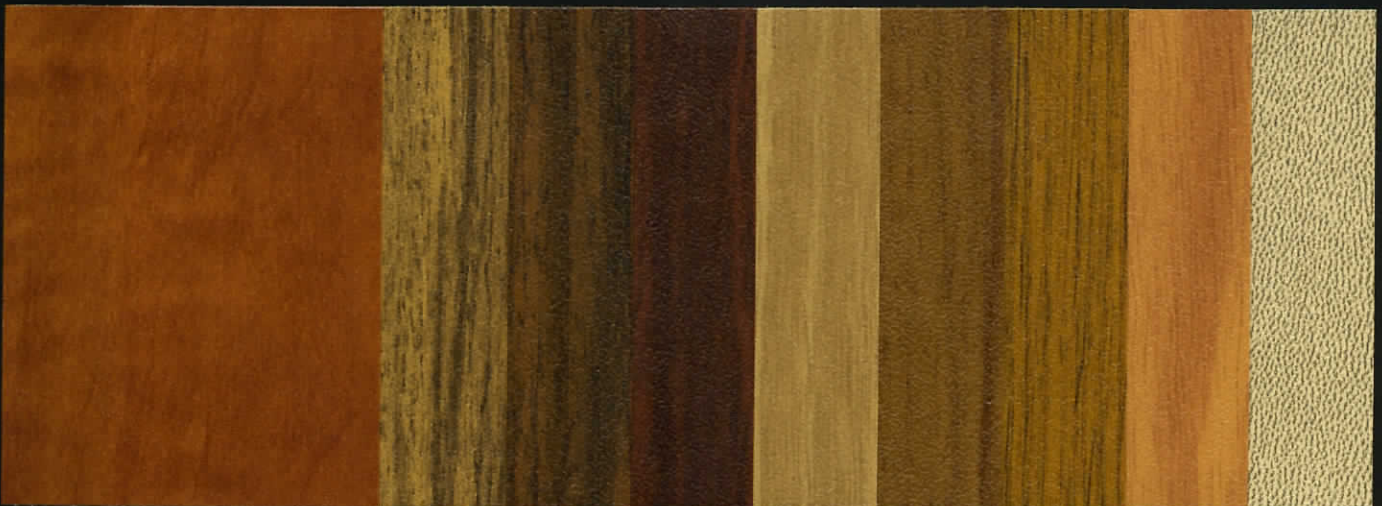
DL21C | DL25SA | DL20SMA | DL7E | DL12E | DL24E | DL30E | DL42E | DL51E



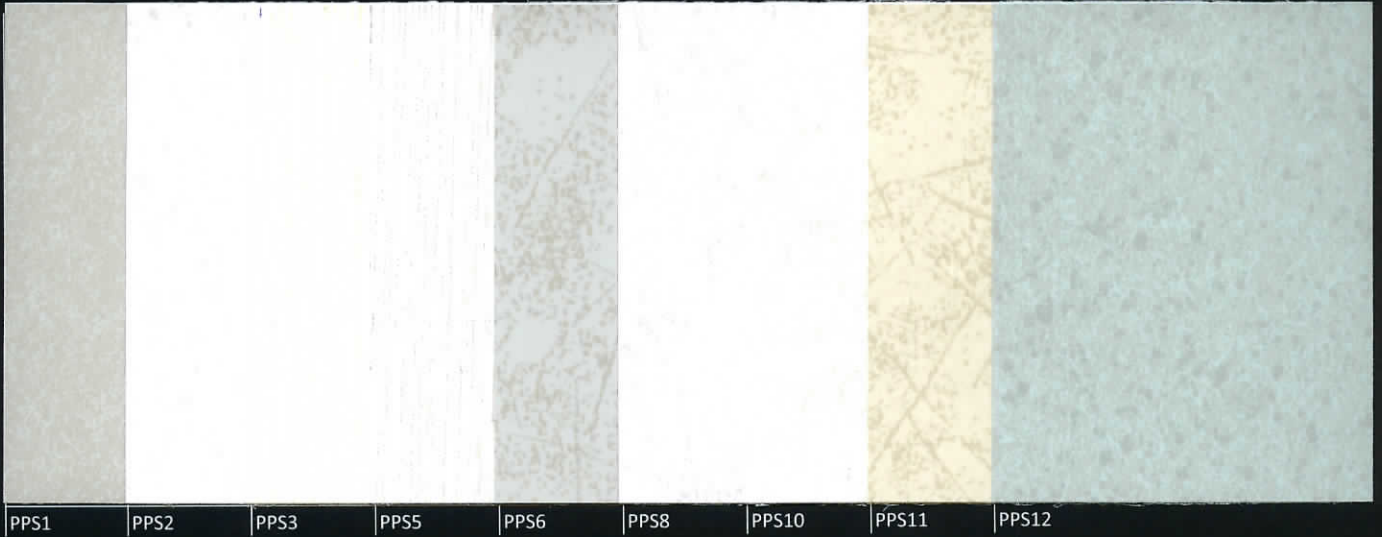
DL81E | DL89E | DL96E | DL12CE | DL16CE | DL17CE | DL19CE | DL29CE | DL32CE



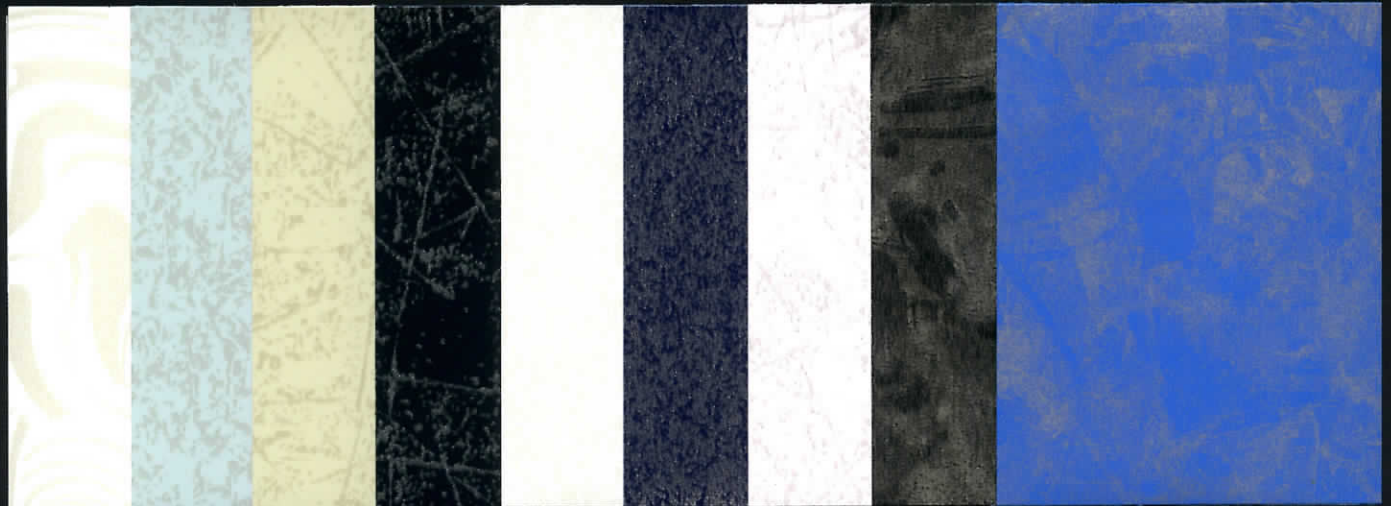
DL36CE | DL39CE | DL40CE | DL43CE | DL44CE | DL45CE | DL49CE | DL89CE | DL96CE



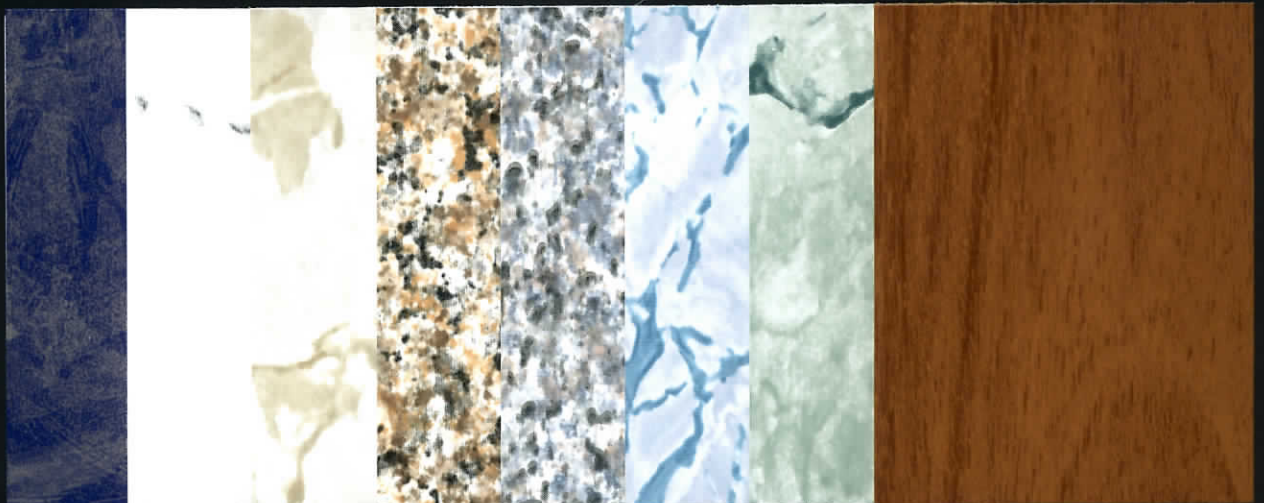
DL99CE | DL28SME | DL46SME | DL57SME | DL59SME | DL60SME | DL77SME | DL78SME | DP1SMA



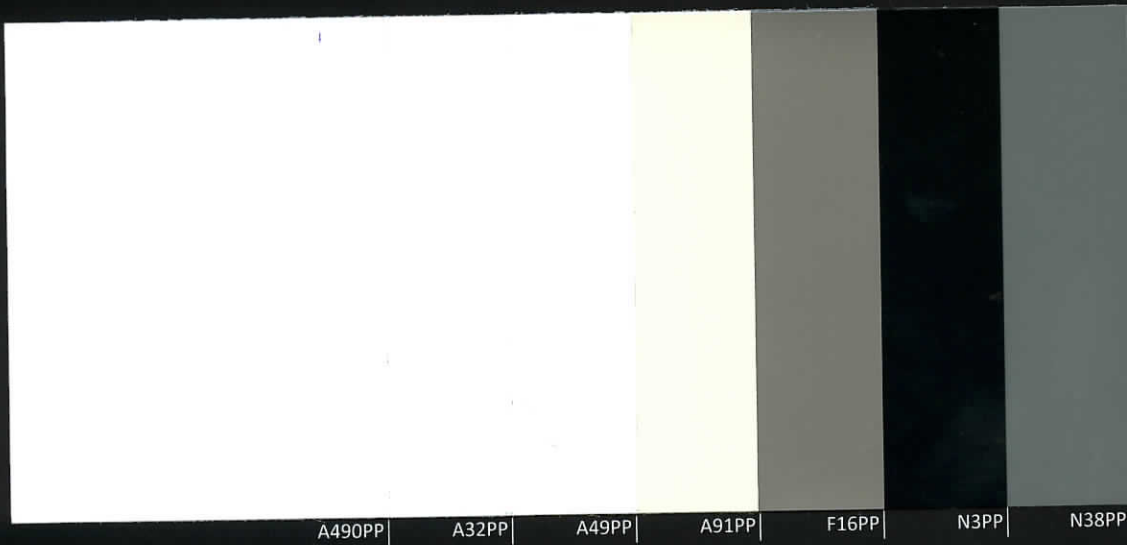
PPS1 | PPS2 | PPS3 | PPS5 | PPS6 | PPS8 | PPS10 | PPS11 | PPS12



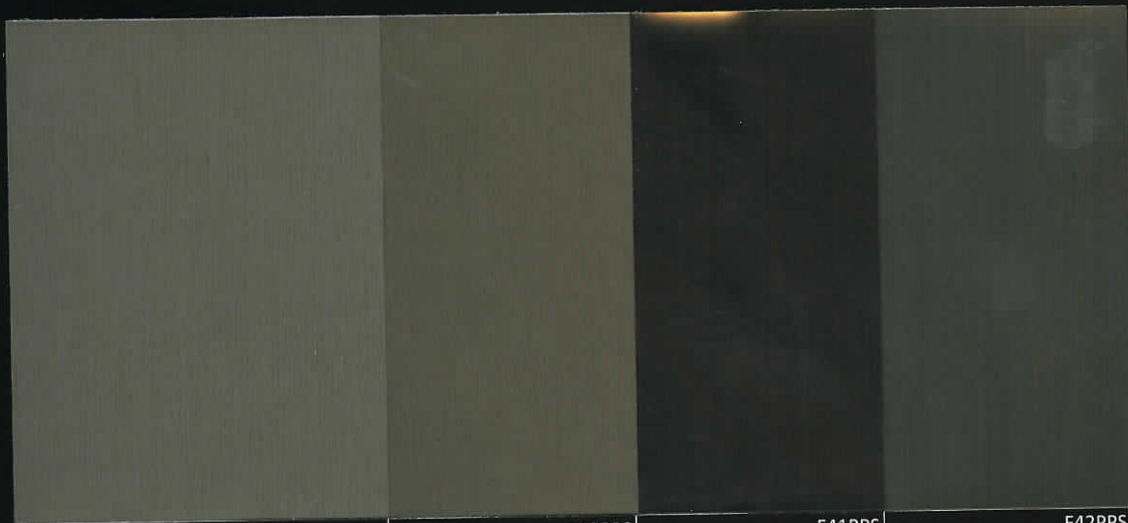
PPS13 | PPS14 | PPS15 | PPS17 | PPS18 | PPS19 | PPS25 | PPS27 | PPS30



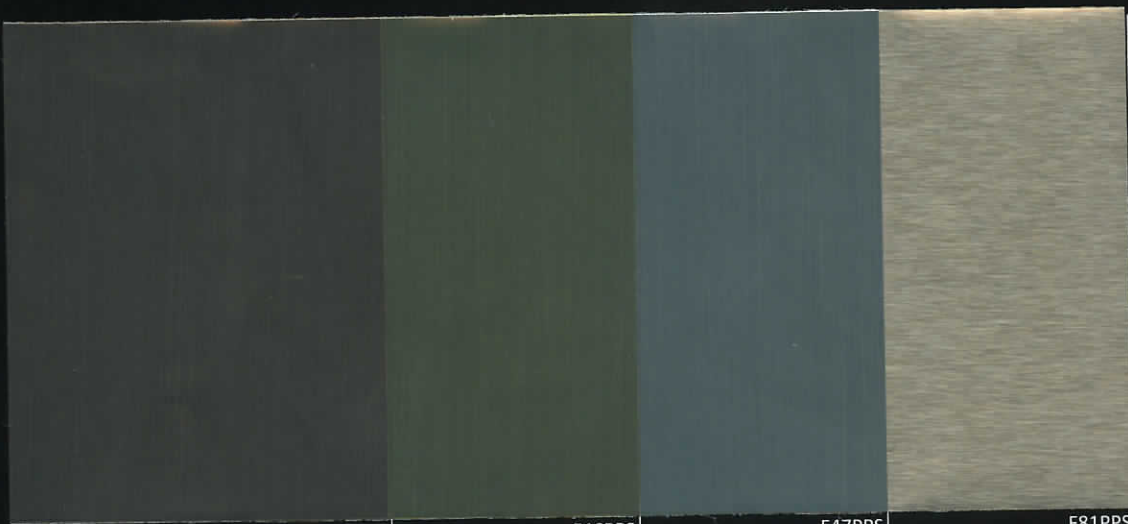
PPS31 | PPS51 | PPS52 | PPS53 | PPS54 | PPS59 | PPS60 | PPS93



A490PP | A32PP | A49PP | A91PP | F16PP | N3PP | N38PP



F12PPS | F15PPS | F41PPS | F42PPS



F45PPS | F46PPS | F47PPS | F81PPS



Lampre S.r.l.
Via A. Magni, 2
20865 Usmate Velate (MB)
Italy
T. +39 039 674.227
F. +39 039 675.018
lampre.italia@lampre.com

Lampre Benelux Spri
Rue Ernest Solvay, 376
4000 Sclessin
(Liège)
Belgium
T. +32 423 476.15
F. +32 423 476.11
lampre.benelux@lampre.com

Lampre Portuguesa Lda.
Estr. Nac. 247 - km. 65 - Carne Assada
2709-505 São João das Lampas
Portugal
T. +351 21 960.84.70
F. +351 21 961.51.93
lampre.portuguesa@lampre.com

Lampre Turçelik Ltd.
Davutpaşa Cad. Yıldız Sk. Gürün
Çıkmaı No: 6/2 34010
Topkapı, İstanbul
Turkey
T. +90 212 482.33.55
F. +90 212 482.33.88
lampre.turcelik@lampre.com

Lampre USA, LLC.
7005 Fulton Court
Montgomery, AL 36117
USA
T. +1 334 215.44.64
F. +1 334 275.46.66
lampre.usa@lampre.com

Lampre Polska Sp. z o.o
Ul. Wschodnia, 8
99-300 Kutno
(Province Łódzkie)
Poland
T. +48 24 254.24.09
F. +48 24 483.60.02.91
lampre.polska@lampre.com

www.lampre.com

Stylish Steel



Learn more at | www.lampre.com
Commercial & Technical Enquires | lampre@lampre.com